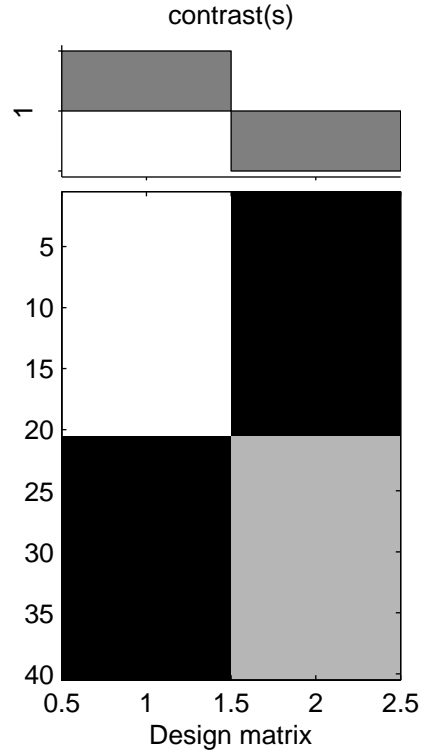
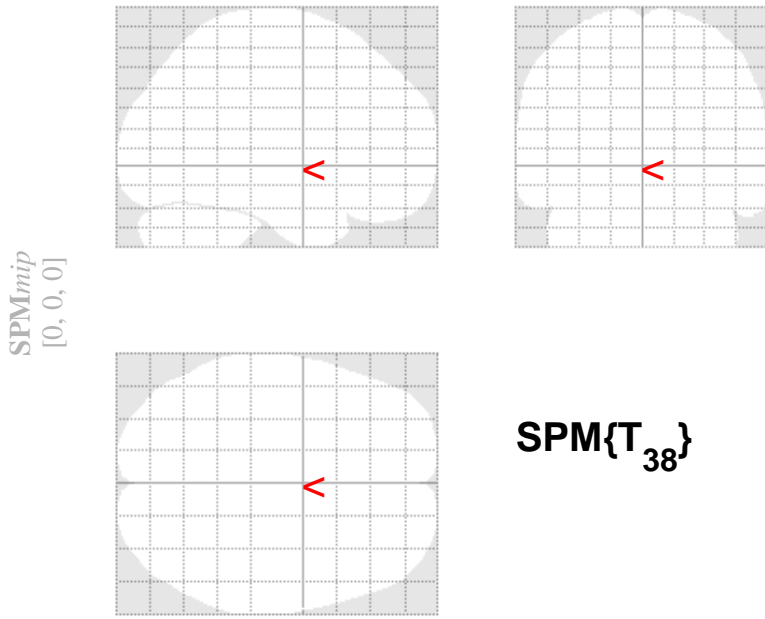


control > patient



SPMresults: results/unmod/mixed-2/c
 Height threshold $T = 3.319030$ { $p < 0.001$ (unc.)}
 Extent threshold $k = 0$ voxels

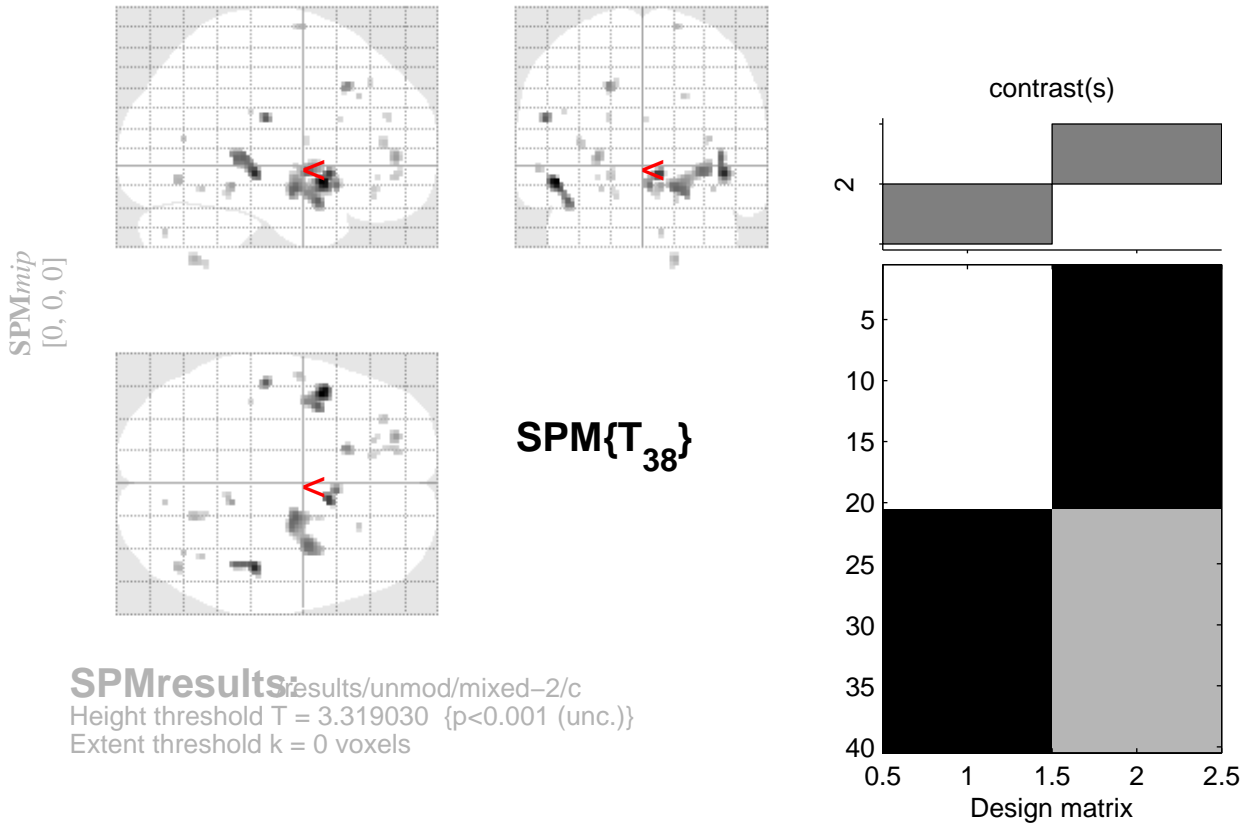
Statistics: p -values adjusted for search volume

cluster-level			voxel-level					mm mm mm		
$p_{corrected}$	k_E	$p_{uncorrected}$	$p_{FWE-corr}$	$p_{FDR-corr}$	T	(Z_{\equiv})	$p_{uncorrected}$			
1.000	1	0.807	1.000	1.000	3.43	3.18	0.001	6	52	42

table shows 3 local maxima more than 8.0mm apart

Height threshold: $T = 3.32$, $p = 0.001$ (1.000) { $p < 0.001$ (unc.)} Degrees of freedom = [1.0, 38.0]
 Extent threshold: $k = 0$ voxels, $p = 1.000$ (1.000) FWHM = 10.0 10.8 10.2 mm mm mm; 5.0 5.4 5.1 {voxels};
 Expected voxels per cluster, $\langle k \rangle = 13.410$ Volume: 1587400; 198425 voxels; 1279.0 resels
 Expected number of clusters, $\langle c \rangle = 17.52$ Voxel size: 2.0 2.0 2.0 mm mm mm; (resel = 137.43 voxels)
 Expected false discovery rate, ≤ 1.00

patient > control



SPMresults: results/unmod/mixed-2/c
 Height threshold T = 3.319030 {p<0.001 (unc.)}
 Extent threshold k = 0 voxels

Statistics: p-values adjusted for search volume

set-level		cluster-level			voxel-level					mm mm mm		
p	c	p _{corrected}	k _E	p _{uncorrected}	p _{FWE-corr}	p _{FDR-corr}	T	(Z _≡)	p _{uncorrected}			
0.021	27	0.217	89	0.014	0.736	0.366	4.48	3.99	0.000	-46	10	-8
					0.990	0.366	3.96	3.60	0.000	-40	8	-18
		0.630	49	0.057	0.907	0.366	4.24	3.81	0.000	44	-26	-4
					0.992	0.366	3.94	3.58	0.000	42	-32	4
		0.855	33	0.110	0.954	0.366	4.13	3.73	0.000	8	14	-4
					0.996	0.366	3.86	3.53	0.000	4	18	-10
		0.995	13	0.306	0.987	0.366	3.98	3.62	0.000	-52	-20	24
		0.024	170	0.001	0.991	0.366	3.95	3.59	0.000	18	-4	-12
					0.995	0.366	3.89	3.55	0.000	32	2	-2
		0.997	12	0.325	0.999	0.366	3.76	3.45	0.000	-18	24	42
		0.982	18	0.230	1.000	0.366	3.66	3.37	0.000	-24	50	4
		0.998	11	0.347	1.000	0.366	3.64	3.35	0.000	10	-38	-10
		0.999	9	0.396	1.000	0.366	3.55	3.28	0.001	44	-66	-8
		0.986	17	0.243	1.000	0.366	3.55	3.28	0.001	18	-58	-48
		1.000	5	0.535	1.000	0.366	3.53	3.27	0.001	18	0	72
		1.000	4	0.583	1.000	0.366	3.49	3.23	0.001	-56	-2	-2
		0.999	8	0.425	1.000	0.366	3.47	3.21	0.001	-34	44	12
		1.000	1	0.807	1.000	0.366	3.46	3.21	0.001	36	-64	14
		1.000	7	0.457	1.000	0.366	3.45	3.20	0.001	-16	50	-6
		1.000	2	0.712	1.000	0.366	3.45	3.20	0.001	22	30	36
		1.000	2	0.712	1.000	0.366	3.44	3.19	0.001	10	-74	-34
		1.000	2	0.712	1.000	0.366	3.44	3.19	0.001	38	-54	-12
		1.000	1	0.807	1.000	0.366	3.43	3.18	0.001	-22	38	-12
		1.000	3	0.640	1.000	0.366	3.40	3.15	0.001	-18	46	26
		1.000	2	0.712	1.000	0.366	3.38	3.14	0.001	-14	36	42

table shows 3 local maxima more than 8.0mm apart

Height threshold: T = 3.32, p = 0.001 (1.000) {p<0.001 (unc.)} Degrees of freedom = [1.0, 38.0]
 Extent threshold: k = 0 voxels, p = 1.000 (1.000) FWHM = 10.0 10.8 10.2 mm mm mm; 5.0 5.4 5.1 {voxels};
 Expected voxels per cluster, <k> = 13.410 Volume: 1587400; 198425 voxels; 1279.0 resels
 Expected number of clusters, <c> = 17.52 Voxel size: 2.0 2.0 2.0 mm mm mm; (resel = 137.43 voxels)
 Expected false discovery rate, <= 0.37 Page 1