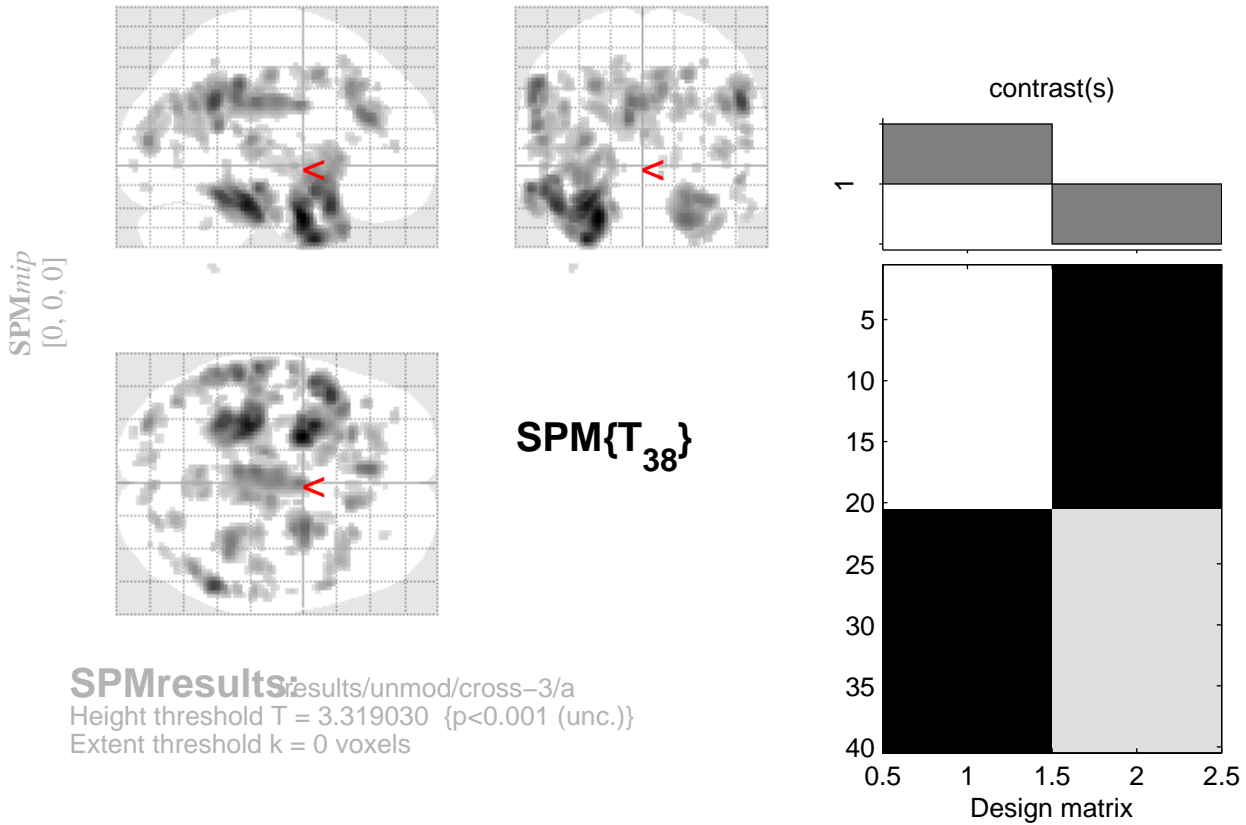


# control > patient



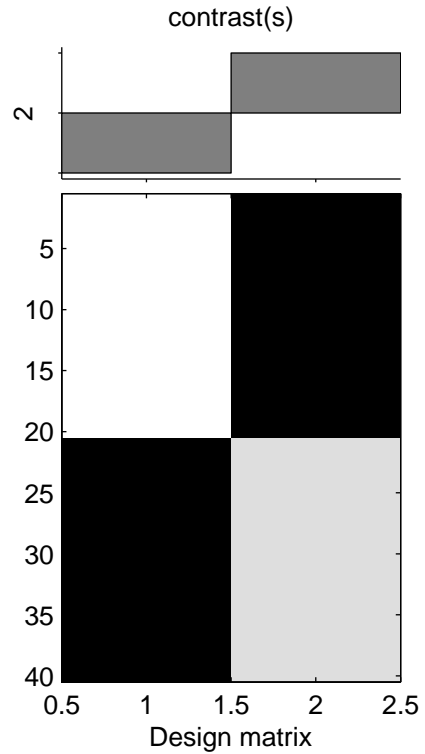
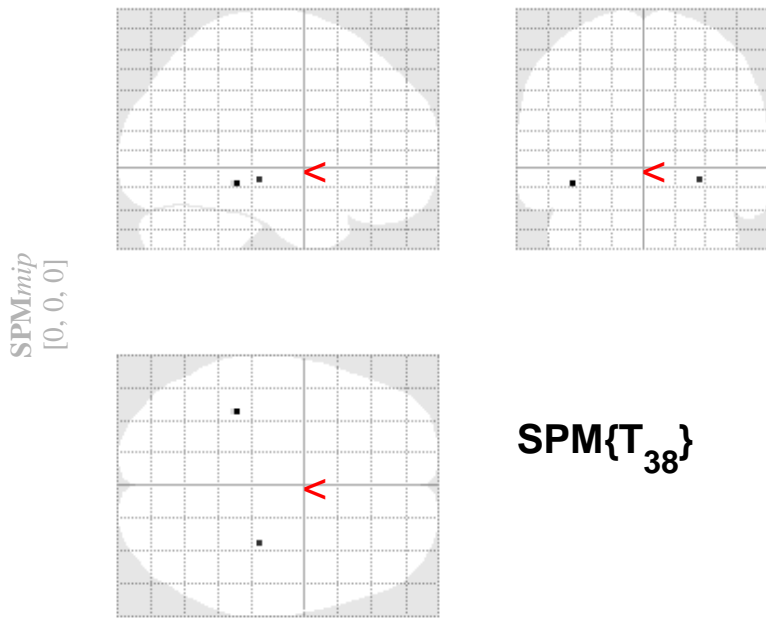
## Statistics: $p$ -values adjusted for search volume

set-level		cluster-level			voxel-level					mm mm mm		
$p$	$c$	$p_{corrected}$	$k_E$	$p_{uncorrected}$	$p_{FWE-corr}$	$p_{FDR-corr}$	$T$	$(Z_{\equiv})$	$p_{uncorrected}$			
0.000	67	0.000	2279	0.000	0.000	0.000	7.63	5.91	0.000	-24	0	-28
					0.002	0.000	7.01	5.58	0.000	-30	6	-38
0.000	1403	0.000	1403	0.000	0.006	0.000	6.53	5.32	0.000	-46	14	-20
					0.001	0.000	7.14	5.65	0.000	-30	-30	-20
0.000	432	0.000	432	0.000	0.009	0.000	6.36	5.22	0.000	-32	-24	-26
					0.013	0.000	6.23	5.14	0.000	-30	-44	-16
0.000	735	0.000	735	0.000	0.013	0.000	6.24	5.15	0.000	52	-48	34
					0.367	0.002	4.89	4.28	0.000	46	-58	32
0.000	464	0.000	464	0.000	1.000	0.018	3.44	3.19	0.001	52	-56	22
					0.036	0.000	5.85	4.91	0.000	-56	-34	42
0.010	216	0.001	216	0.001	0.165	0.001	5.25	4.53	0.000	-56	-46	20
					0.090	0.001	5.50	4.69	0.000	-8	36	24
0.000	1262	0.000	1262	0.000	0.333	0.002	4.94	4.31	0.000	-54	-42	40
					0.082	0.001	5.53	4.71	0.000	24	2	-28
0.001	324	0.000	324	0.000	0.204	0.001	5.16	4.46	0.000	24	-4	-18
					0.997	0.010	3.83	3.50	0.000	26	-6	-36
0.230	91	0.016	91	0.016	0.090	0.001	5.50	4.69	0.000	-8	36	24
					0.118	0.001	5.39	4.62	0.000	-6	-26	34
0.045	154	0.003	154	0.003	0.190	0.001	5.19	4.48	0.000	0	-2	32
					0.247	0.002	5.08	4.41	0.000	-2	-14	34
0.000	67	0.000	2279	0.000	0.201	0.001	5.17	4.47	0.000	32	-38	-18
					0.844	0.005	4.32	3.87	0.000	26	-24	-20
0.000	1403	0.000	1403	0.000	1.000	0.015	3.58	3.30	0.000	32	-22	-26
					0.314	0.002	4.97	4.33	0.000	-26	26	42
0.000	432	0.000	432	0.000	1.000	0.020	3.37	3.13	0.001	-20	22	48
					0.346	0.002	4.92	4.30	0.000	-32	-82	12

table shows 3 local maxima more than 8.0mm apart

Height threshold:  $T = 3.32$ ,  $p = 0.001$  (1.000) { $p < 0.001$  (unc.)} Degrees of freedom = [1.0, 38.0]  
 Extent threshold:  $k = 0$  voxels,  $p = 1.000$  (1.000) FWHM = 10.5 10.6 10.6 mm mm mm; 5.2 5.3 5.3 {voxels};  
 Expected voxels per cluster,  $\langle k \rangle = 14.334$  Volume: 1587400; 198425 voxels; 1196.6 resels  
 Expected number of clusters,  $\langle c \rangle = 16.49$  Voxel size: 2.0 2.0 2.0 mm mm mm; (resel = 146.90 voxels)  
 Expected false discovery rate,  $\leq 0.02$  Page 1

# patient > control



**SPMresults:** results/unmod/cross-3/a  
 Height threshold  $T = 3.319030$  { $p < 0.001$  (unc.)}  
 Extent threshold  $k = 0$  voxels

## Statistics: $p$ -values adjusted for search volume

set-level		cluster-level			voxel-level					mm mm mm		
$p$	$c$	$p_{corrected}$	$k_E$	$p_{uncorrected}$	$p_{FWE-corr}$	$p_{FDR-corr}$	$T$	$(Z_{\equiv})$	$p_{uncorrected}$			
1.000	2	1.000	2	0.722	1.000	1.000	3.50	3.24	0.001	-38	-36	-8
		1.000	1	0.815	1.000	1.000	3.49	3.23	0.001	30	-24	-6

table shows 3 local maxima more than 8.0mm apart

Height threshold:  $T = 3.32$ ,  $p = 0.001$  (1.000) { $p < 0.001$  (unc.)} Degrees of freedom = [1.0, 38.0]  
 Extent threshold:  $k = 0$  voxels,  $p = 1.000$  (1.000) FWHM = 10.5 10.6 10.6 mm mm mm; 5.2 5.3 5.3 {voxels};  
 Expected voxels per cluster,  $\langle k \rangle = 14.334$  Volume: 1587400; 198425 voxels; 1196.6 resels  
 Expected number of clusters,  $\langle c \rangle = 16.49$  Voxel size: 2.0 2.0 2.0 mm mm mm; (resel = 146.90 voxels)  
 Expected false discovery rate,  $\leq 1.00$