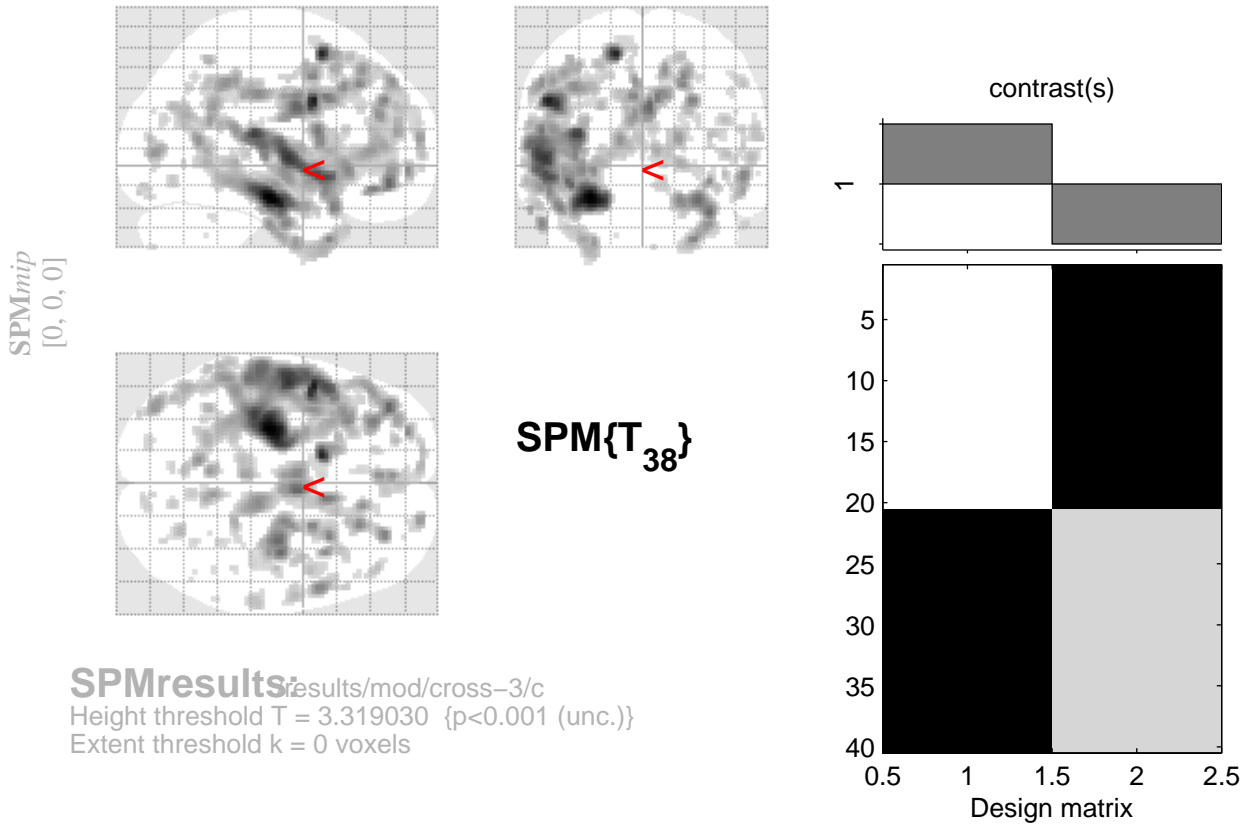


control > patient



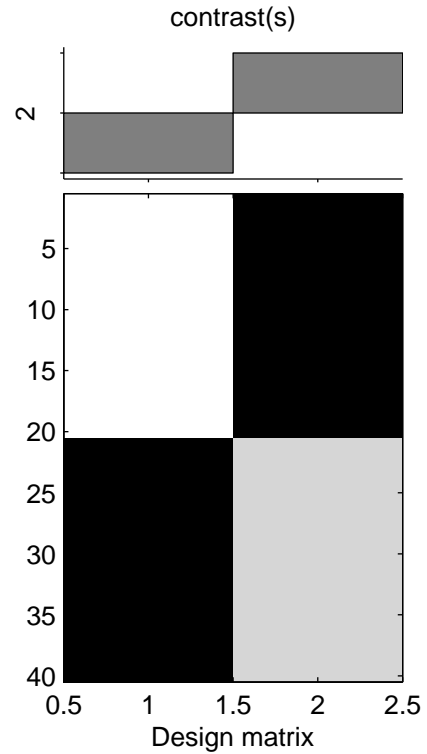
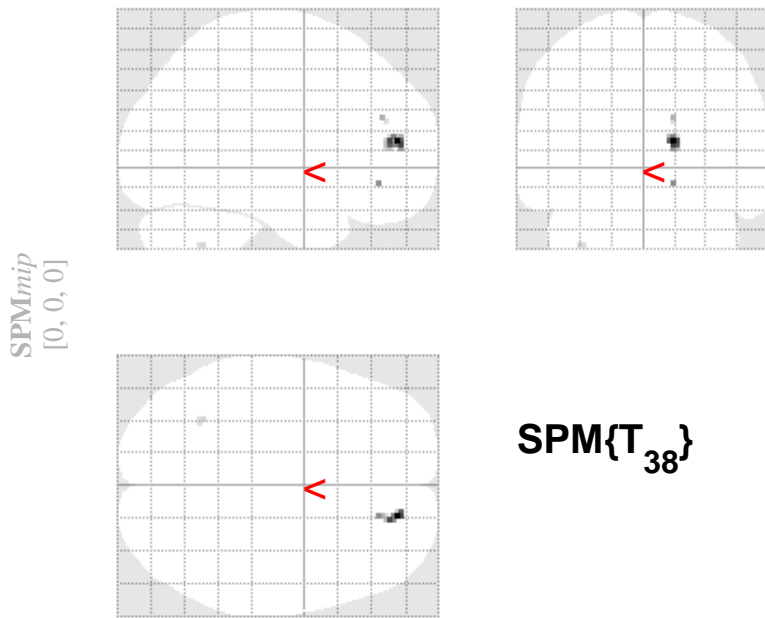
Statistics: p -values adjusted for search volume

set-level		cluster-level			voxel-level					mm mm mm		
p	c	$p_{corrected}$	k_E	$p_{uncorrected}$	$p_{FWE-corr}$	$p_{FDR-corr}$	T	(Z_{\equiv})	$p_{uncorrected}$			
0.000	75	0.000	5334	0.000	0.000	0.000	7.75	5.97	0.000	-28	-18	-16
					0.002	0.000	6.97	5.56	0.000	-50	6	34
					0.006	0.000	6.58	5.34	0.000	-52	-8	4
		0.013	194	0.001	0.003	0.000	6.82	5.48	0.000	-14	10	58
					0.977	0.008	4.04	3.66	0.000	-24	20	52
					1.000	0.015	3.60	3.32	0.000	-4	10	60
		0.000	628	0.000	0.067	0.001	5.64	4.78	0.000	4	-2	30
					0.199	0.001	5.19	4.49	0.000	8	12	36
					0.342	0.002	4.95	4.32	0.000	-4	-4	36
		0.000	594	0.000	0.094	0.001	5.50	4.69	0.000	36	-12	-24
					0.097	0.001	5.49	4.68	0.000	30	-14	-18
					0.253	0.002	5.09	4.42	0.000	28	14	-38
		0.602	51	0.053	0.270	0.002	5.06	4.40	0.000	26	44	34
		0.674	46	0.064	0.296	0.002	5.02	4.37	0.000	-54	-10	-30
		0.189	94	0.012	0.304	0.002	5.00	4.36	0.000	54	10	-6
		0.016	186	0.001	0.318	0.002	4.98	4.34	0.000	22	30	42
					0.477	0.003	4.77	4.20	0.000	12	32	50
					0.972	0.008	4.06	3.68	0.000	20	24	56
		0.547	55	0.045	0.341	0.002	4.95	4.32	0.000	22	6	46
		0.674	46	0.064	0.362	0.002	4.92	4.30	0.000	-26	56	-2
		0.931	26	0.153	0.405	0.003	4.86	4.26	0.000	36	12	-8
		0.000	370	0.000	0.481	0.003	4.77	4.20	0.000	-4	40	26
					0.525	0.003	4.72	4.16	0.000	-4	48	44
					0.994	0.010	3.91	3.56	0.000	-2	48	14
		0.007	224	0.000	0.483	0.003	4.77	4.19	0.000	-54	-16	-10
					0.966	0.008	4.09	3.70	0.000	-62	-22	-8
					0.987	0.009	3.98	3.62	0.000	-56	2	-20

table shows 3 local maxima more than 8.0mm apart

Height threshold: $T = 3.32$, $p = 0.001$ (1.000) { $p < 0.001$ (unc.)} Degrees of freedom = [1.0, 38.0]
 Extent threshold: $k = 0$ voxels, $p = 1.000$ (1.000) FWHM = 9.9 10.9 10.2 mm mm mm; 4.9 5.5 5.1 {voxels};
 Expected voxels per cluster, $\langle k \rangle = 13.432$ Volume: 1587400; 198425 voxels; 1276.9 resels
 Expected number of clusters, $\langle c \rangle = 17.49$ Voxel size: 2.0 2.0 2.0 mm mm mm; (resel = 137.66 voxels)
 Expected false discovery rate, ≤ 0.02 Page 1

patient > control



SPMresults: results/mod/cross-3/c
 Height threshold $T = 3.319030$ { $p < 0.001$ (unc.)}
 Extent threshold $k = 0$ voxels

Statistics: p -values adjusted for search volume

set-level		cluster-level			voxel-level					mm mm mm		
p	c	$p_{corrected}$	k_E	$p_{uncorrected}$	$p_{FWE-corr}$	$p_{FDR-corr}$	T	(Z_{\equiv})	$p_{uncorrected}$			
1.000	4	0.978	19	0.218	0.977	1.000	4.04	3.66	0.000	16	50	14
		1.000	1	0.807	1.000	1.000	3.59	3.31	0.000	16	40	-8
		1.000	2	0.712	1.000	1.000	3.48	3.22	0.001	16	42	26
		1.000	3	0.641	1.000	1.000	3.37	3.13	0.001	-34	-54	-40

table shows 3 local maxima more than 8.0mm apart

Height threshold: $T = 3.32$, $p = 0.001$ (1.000) { $p < 0.001$ (unc.)} Degrees of freedom = [1.0, 38.0]
 Extent threshold: $k = 0$ voxels, $p = 1.000$ (1.000) FWHM = 9.9 10.9 10.2 mm mm mm; 4.9 5.5 5.1 {voxels};
 Expected voxels per cluster, $\langle k \rangle = 13.432$ Volume: 1587400; 198425 voxels; 1276.9 resels
 Expected number of clusters, $\langle c \rangle = 17.49$ Voxel size: 2.0 2.0 2.0 mm mm mm; (resel = 137.66 voxels)
 Expected false discovery rate, ≤ 1.00