



The
University
Of
Sheffield.

POLARIS
Polarised lung and respiratory imaging Sheffield
POLARised Imaging Systems

Postdoctoral Research Fellowships and PhD studentships

University of Sheffield, UK

Opportunities for experienced **MRI physicists / RF engineers** to work in the POLARIS MRI Research Group at the University of Sheffield. The group consists of physicists, engineers and clinicians working on the development and clinical evaluation of lung MR imaging techniques, our range of research is outlined at www.shef.ac.uk/polaris

Post doctoral posts will involve implementation of novel lung imaging techniques for ^{129}Xe , ^3He and ^1H lung MRI. Candidates should have a PhD in MRI Physics/Engineering (or have equivalent industrial experience) or equivalent MR industrial experience and preferably have a published track record in pulse sequence development (GE EPIC), gas hyper-polarisation physics or RF coil engineering research.

PhD students should have undergraduate/masters degree in Physics or Electrical Engineering.

Enquiries about both posts should be made to Jim Wild : j.m.wild@sheffield.ac.uk



Polariser physics



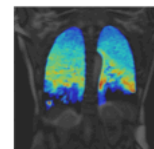
MR hardware



Image
acquisition



Image processing
computational
modelling



Clinical
evaluation



Technology development for clinical lung imaging with hyperpolarised gas and proton MRI